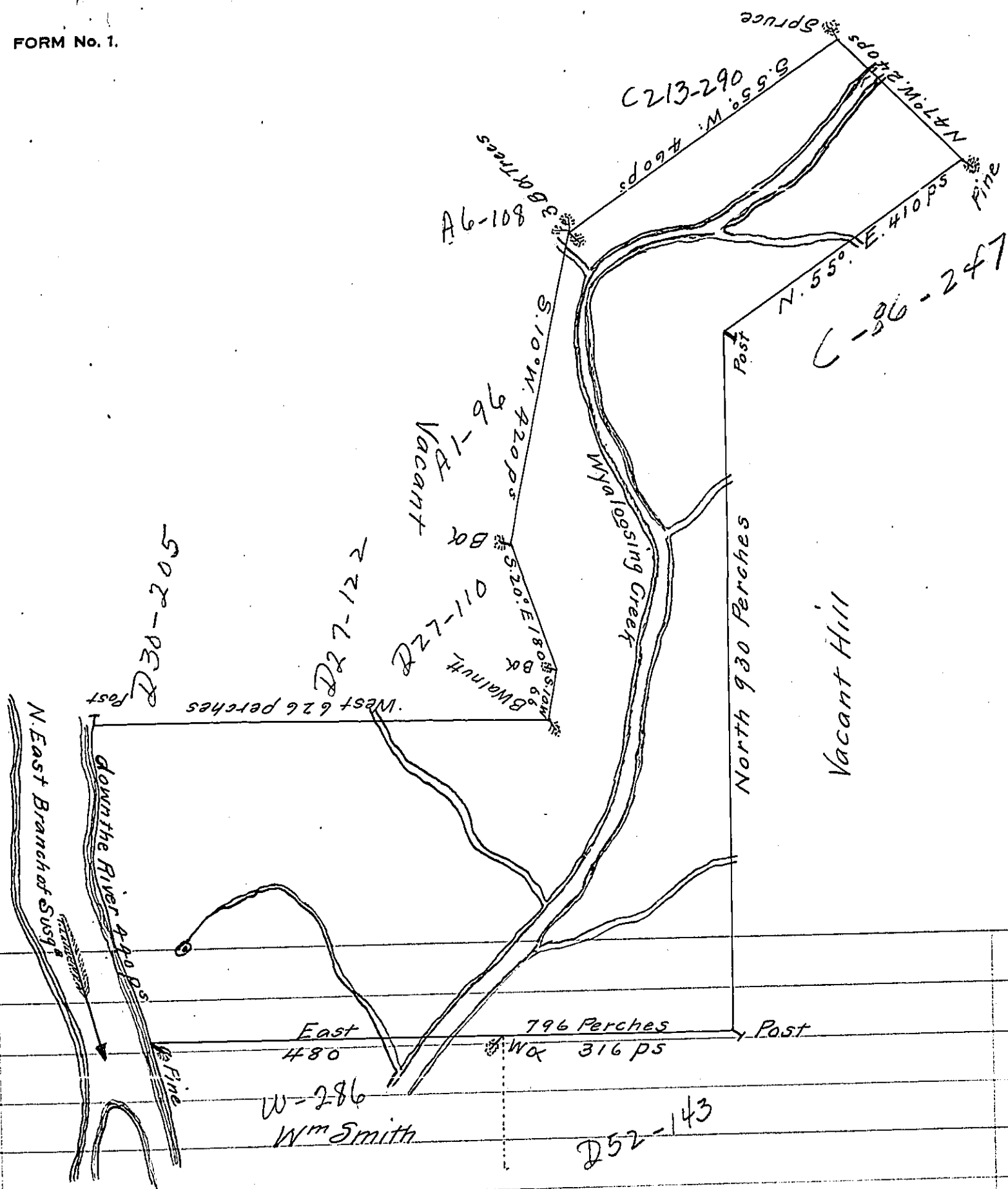


FORM No. 1.



A Draught of a Tract of Land called "Dundee" Situate on the Easterly side of the North East Branch of Susquehanna River and on a large Stream of Water called Wyalosing Creek containing three thousand five hundred and Twenty Acres besides the usual allowance of 6 p Cent for Roads &^{ra} Surveyed for The Honorable The Proprietaries On the 4th 5th & 6th days of October 1773. In pursuance of this Warrant Dated the 27th Day of September 1773 for 10,000 Acres.

To John Lu Kens Esq^r
Survey^r Gen^l

by Chas Stewart Dy Sur^r

IN TESTIMONY that the above is a copy of the original remaining on file in the Department of Internal Affairs of Pennsylvania, made conformably to an Act of Assembly approved the 16th day of February, 1833, I have hereunto set my Hand and caused the Seal of said Department to be affixed at Harrisburg, this Twentieth day of April 1910

Henry Aouch
Secretary of Internal Affairs.